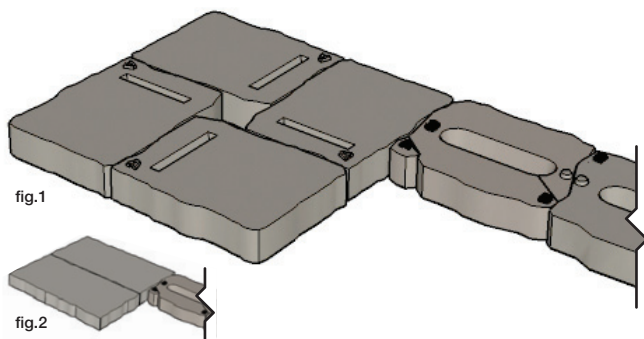


Integrated Pillar & Seat Wall Flush to Edge

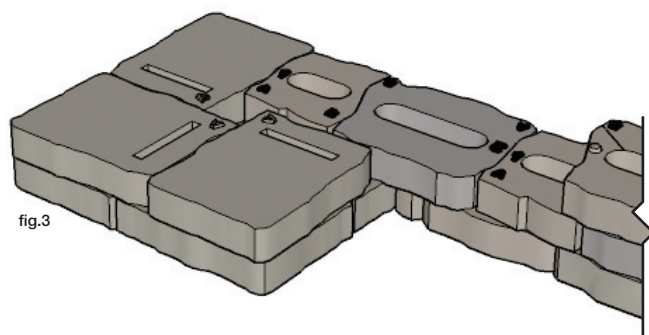
Note: All components should be secured with concrete adhesive.

1 Non-Integrated Layer



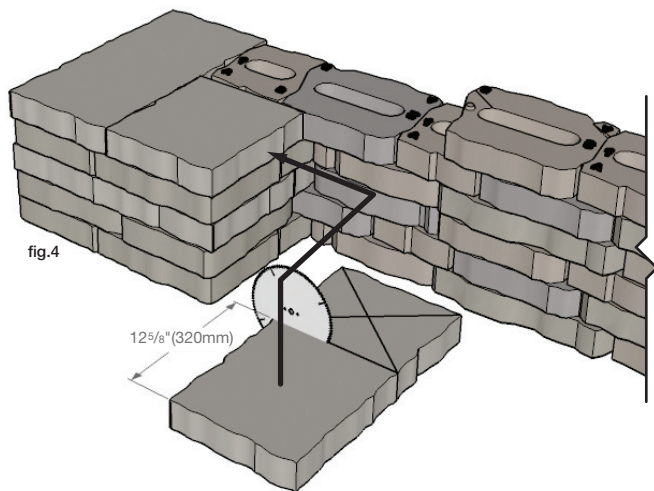
Create pillar base by using 4 Long Corner units as shown (fig.1) or 2 Long Coping units (fig.2). Using a Standard unit (SideA), abut the seat wall layer flush to pillar edge.

2 Integration into Corner Unit Layer



Place 3 Long Corner units as shown (fig.3) and abut a Standard 4 or 1+2 unit so that the seat wall is now integrated into the pillar. Continue to build pillar/seat wall by randomly using either integrated or non-integrated layers.

3 Integration into Coping Unit Layer



Place a Long Coping unit as shown (fig.4) and abut a Standard 4 or 1+2 unit so that the seat wall is now integrated into the pillar. To finish, cut another Long Coping unit to length, measuring fit to accommodate the Standard unit rock face, approx. 12 5/8" (320mm). Continue to build pillar/seat wall by randomly using either integrated or non-integrated layers.

