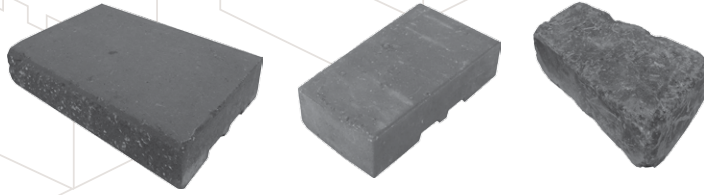


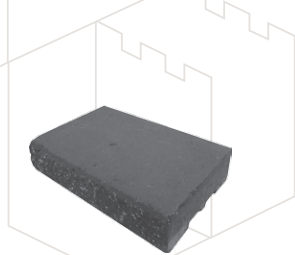
COPING UNITS (CAPS)

PISA2®/ROMANPISA® /CORNERSTONE

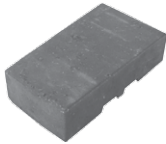


COPING UNITS (CAPS)

PISA2®/ROMANPISA® /CORNERSTONE



Capstone



Reverse-a-cap



Roman Reverse-a-cap

Product Name	Dimensions	Block Coverage	Pallet Coverage	Pallet Quantity	Pallet Weight
Capstone	457 x 305 x 76mm 18 x 12 x 3"	1.5/lf	96 lf	64	1528 kg 3368 lbs
Reverse-a-cap	200 (F) 178 (B) x 356 x 76mm 8 (F) 7 (B) x 14 x 3"	.625/lf	75 lf	120	1545 kg 3407 lbs
Roman Reverse-a-cap	200 (F) 152 (B) x 356 x 76mm 8 (F) 6 (B) x 14 x 3"	.58/lf	42 lf	72	1528 kg 3369 lbs

Colour Finishes



GREY

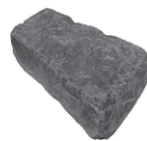


DESERT BUFF



CHARCOAL

Colour availability may vary by region. Product is manufactured in metric measurements, imperial measurements are nominal.



R ROMAN
TEXTURED
FINISH

Roman textured finish blocks undergo a unique tumbling process that distresses the edges and corners, resulting in a more natural and softened appearance versus the smooth surface of a Regular block.



Reverse-a-cap



Roman Reverse-a-cap



Capstone

